

TYPICAL STUD SCHEDULE		
TYPE	STUD SIZE	SPACING
1	600S162-43	16" o.c.
2	600S162-54	16" o.c.
3	600S200-54	16" o.c.
4	600S162-43	16" o.c.

NOTE:
TYPICAL TRACK AND SILL TO BE 1 1/2" DEEP AND MATCH STUD SIZE AND GAUGE, U.N.O. DEEP LEG DEFLECTION TRACK TO HAVE 2" DEEP LEG AND MATCH STUD GAUGE. PROVIDE VERTICAL SLOTTED HOLES TO ACCOMMODATE 3/4" DEFLECTION, U.N.O.

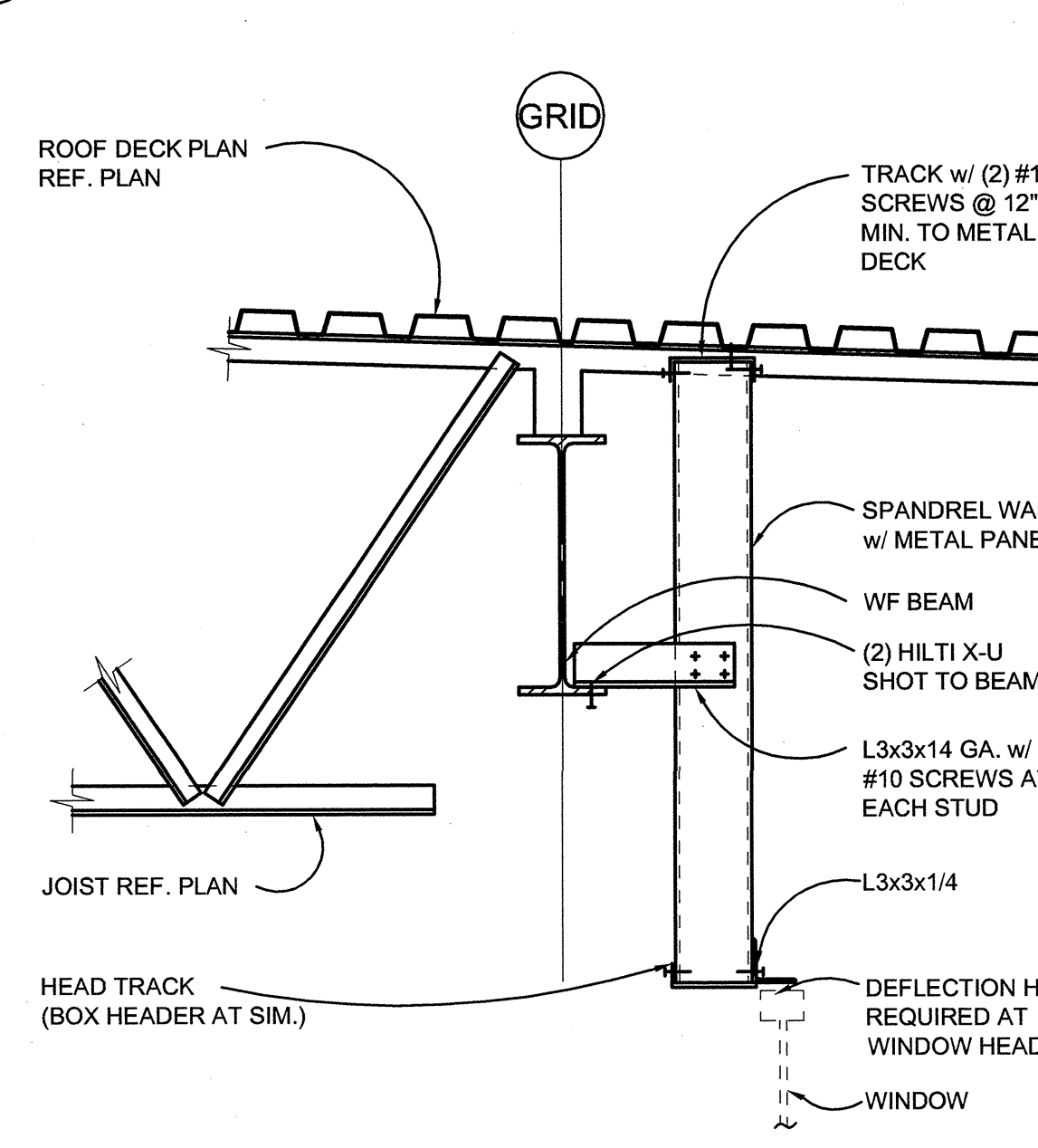
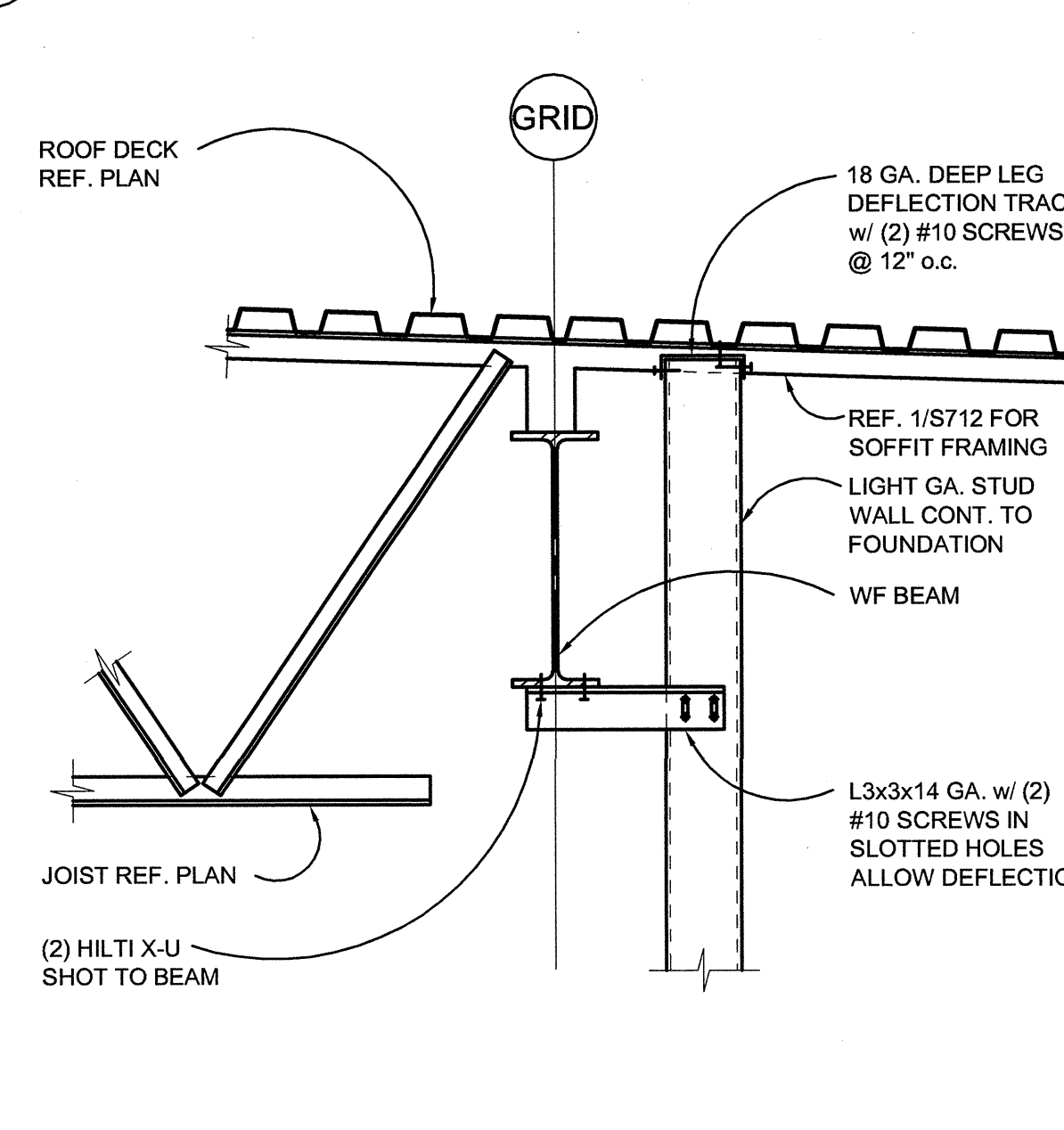
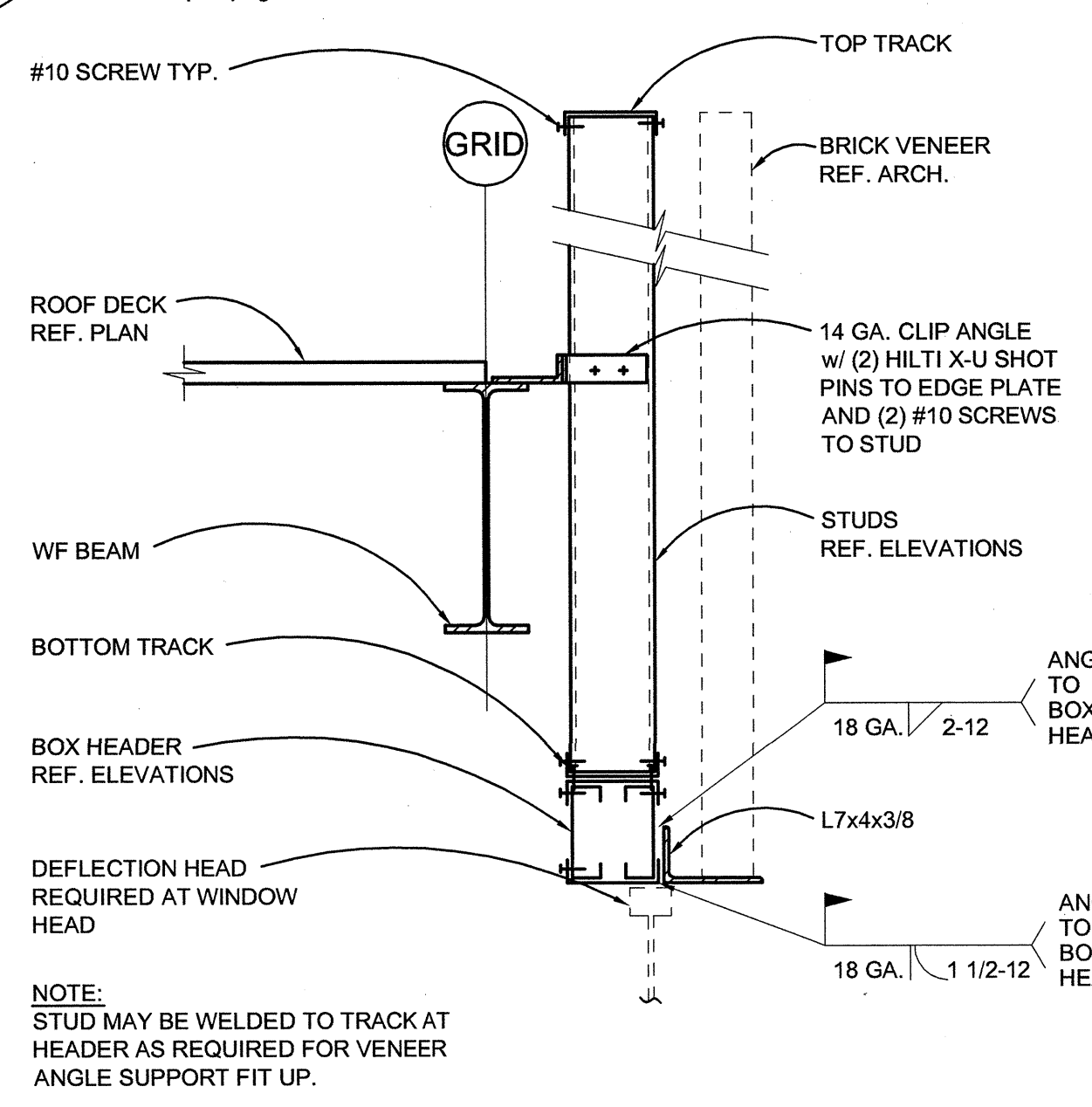
17 CLADDING DETAIL AT ROOF
1"=1'-0"

13 CLADDING DETAIL AT WINDOW
1"=1'-0"

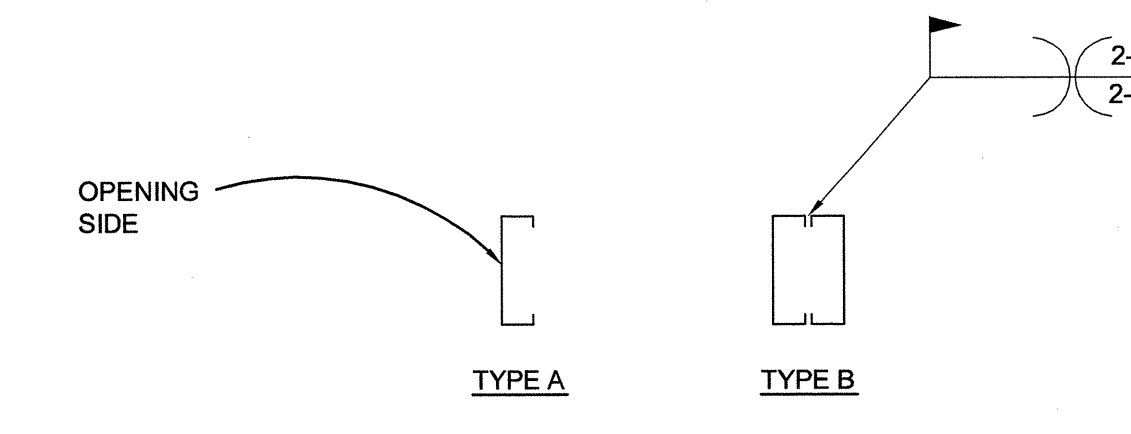
9 SILL SUPPORT POST
1"=1'-0"

5 HEADER DETAIL
1"=1'-0"

1 STUD SCHEDULE



TYPICAL INTERIOR NON-BEARING HEADER SCHEDULE					
OPENING SIZE	HEAD STUD	HEAD TRACK	JAMB STUD	SILL TRACK	END CONNECTION
0' - 8'-0"	(2) 600S162-33	(2) 600T100-33	600S250-43	600T150-33	L3x3x14 GA. w/ (2) #10
8'-0" - 12'-0"	(2) 600S162-33	(2) 600T100-43	(2) 600S162-43	600T150-54	L3x3x14 GA. TOP AND BOTTOM w/ (2) #10
12'-0" - 18'-0"	(2) 600S162-43	(2) 600T150-43	(2) 600S162-43	600T150-97	L3x3x14 GA. TOP AND BOTTOM w/ (2) #10
18'-0" - 24'-0"	(2) 600S162-54	(2) 600T150-54	(2) 600S200-54	(2) 600T150-68	L3x3x14 GA. TOP AND BOTTOM w/ (4) #10
> 24'-0"	CONTACT ENGINEER OF RECORD				



TYPICAL JAMB SCHEDULE		
TYPE	JAMB SIZE	CONFIGURATION TYPE
1	(1) 600S162-43	TYPE A
2	(2) 600S162-43	TYPE B
3	(2) 600S162-54	TYPE B
4	(2) 600S200-68	TYPE B
5	(2) 600S250-68	TYPE B

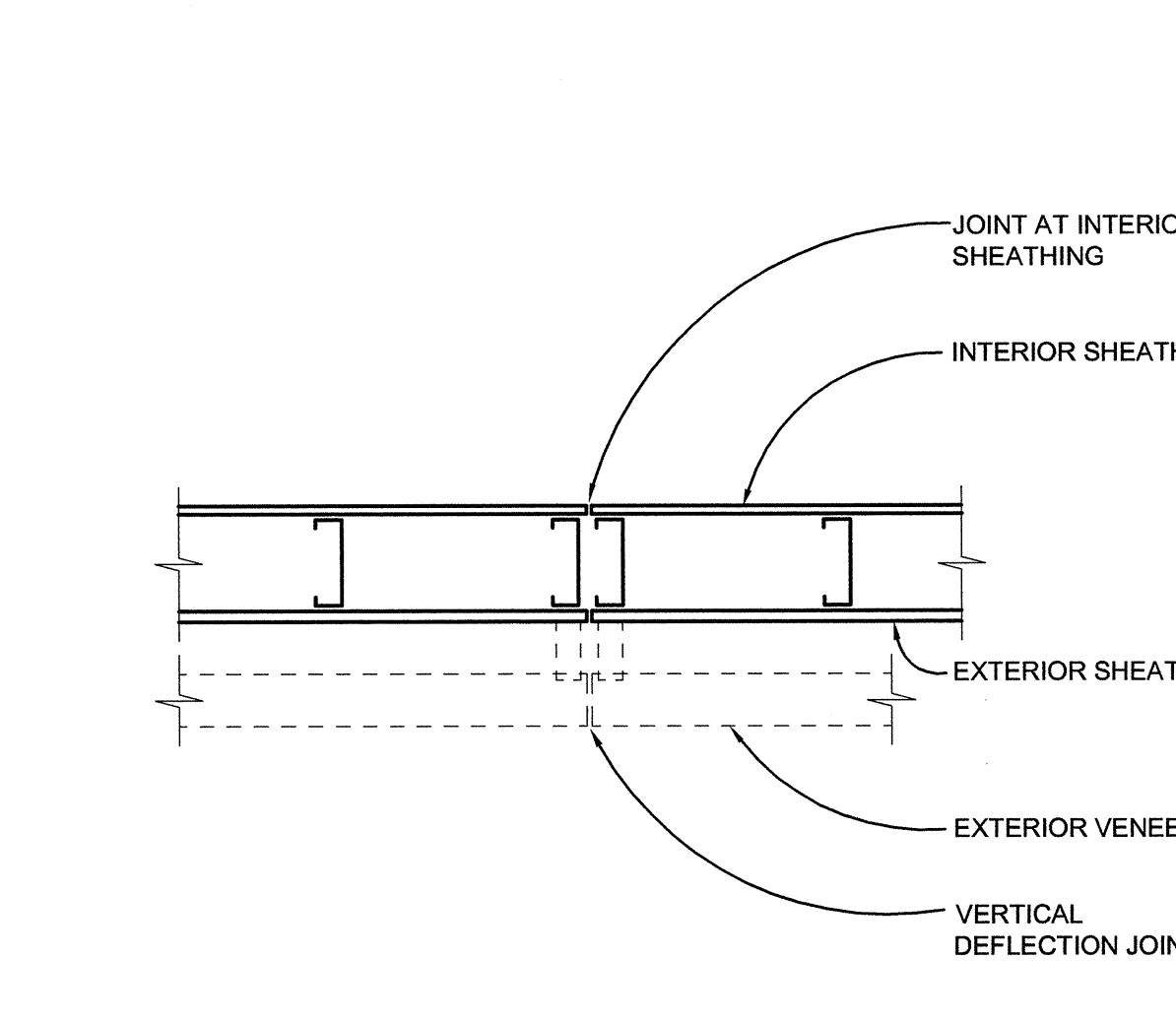
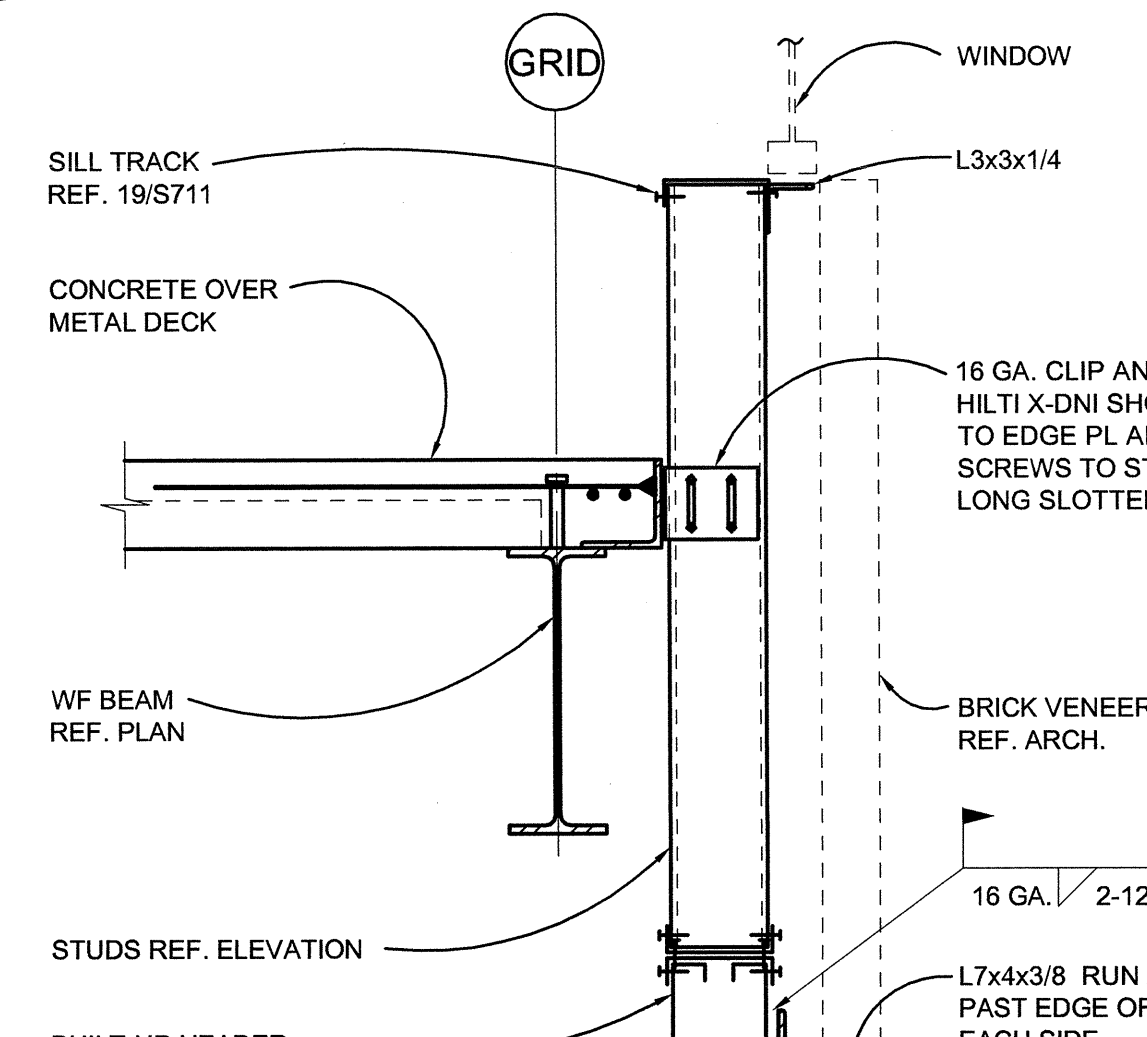
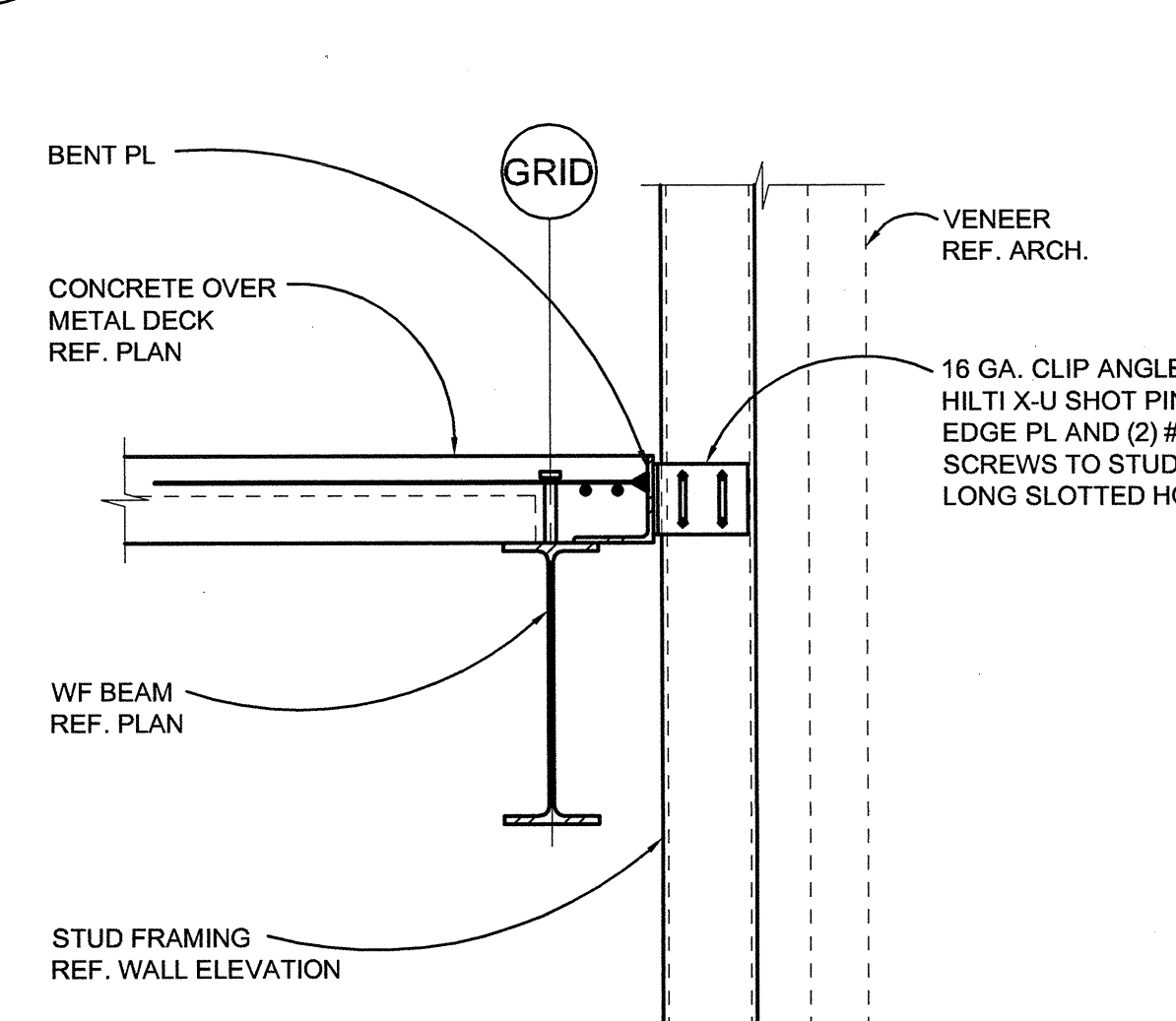
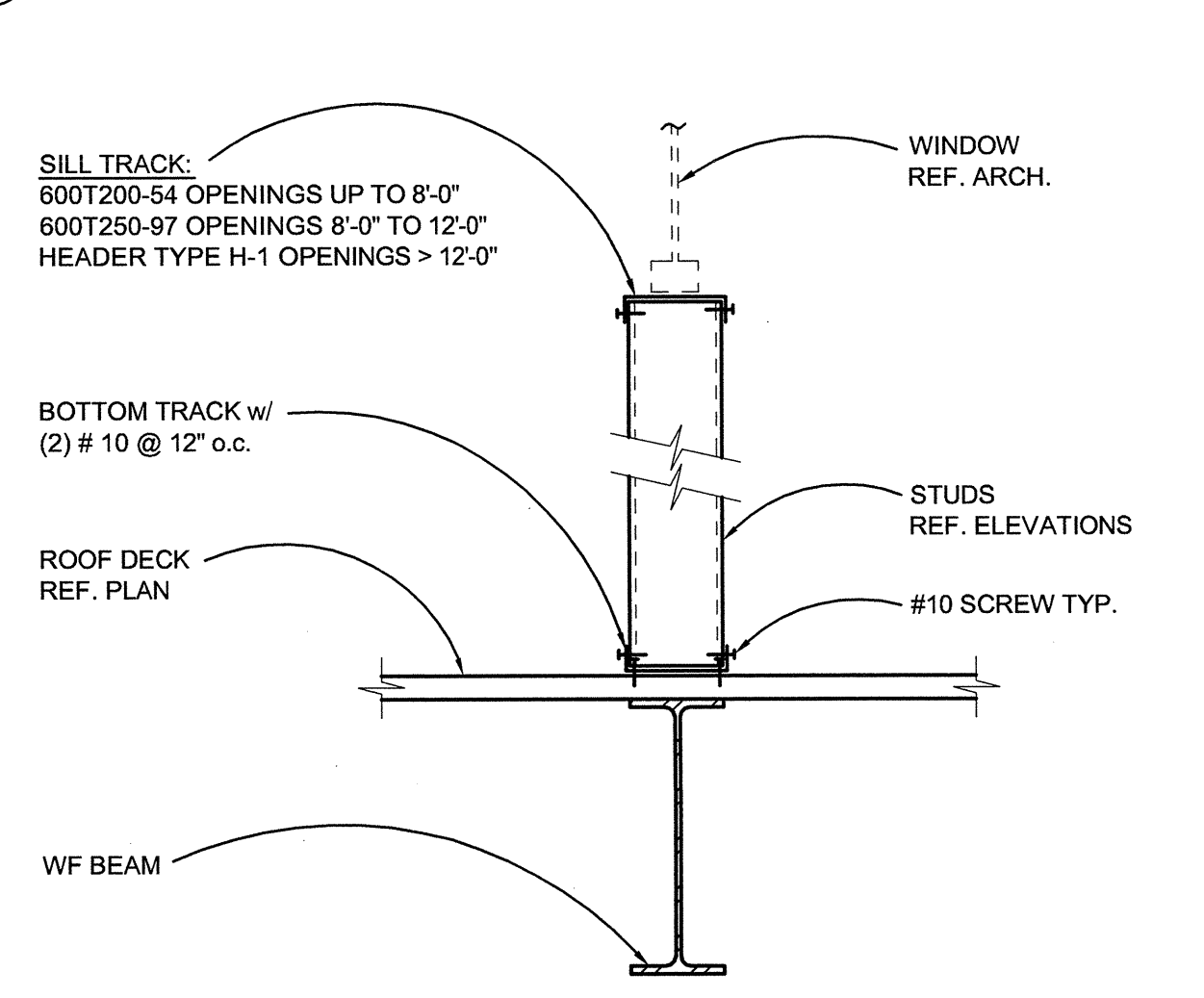
18 CLADDING DETAIL AT ROOF
1"=1'-0"

14 CLADDING DETAIL AT ROOF
1"=1'-0"

10 CLADDING DETAIL AT ROOF
1"=1'-0"

6 NON-BEARING HEADER SCHEDULE
1"=1'-0"

2 TYPICAL JAMB SCHEDULE



STEEL STUDS:
STEEL STUDS SHALL BE C-STUDS WITH A MINIMUM YIELD OF 33,000 PSI FOR 18 AND 50,000 PSI FOR 12, 14, AND 16 GAUGE. STUDS SHALL BE OF THE SIZE, GAUGE, AND SPACING SHOWN ON THE DRAWINGS. MINIMUM SECTION PROPERTIES SHALL BE PER STEEL STUD MANUFACTURER'S ASSOCIATION (SSMA). PROVIDE BRIDGING IN CONFORMANCE WITH THE MANUFACTURER'S RECOMMENDATIONS ADEQUATE FOR DEVELOPMENT OF THE FULL MOMENT CAPACITY OF THE STUDS. FOR LOAD-BEARING STUDS, TRACK SHALL BE OVERSIZE TO PROVIDE FULL STUD BEARING. SCREWS SHALL BE ELCO DRILL-FLEX, HILTI KWIK-FLEX, OR APPROVED. WELDING SHALL CONFORM WITH AWS D1.3.

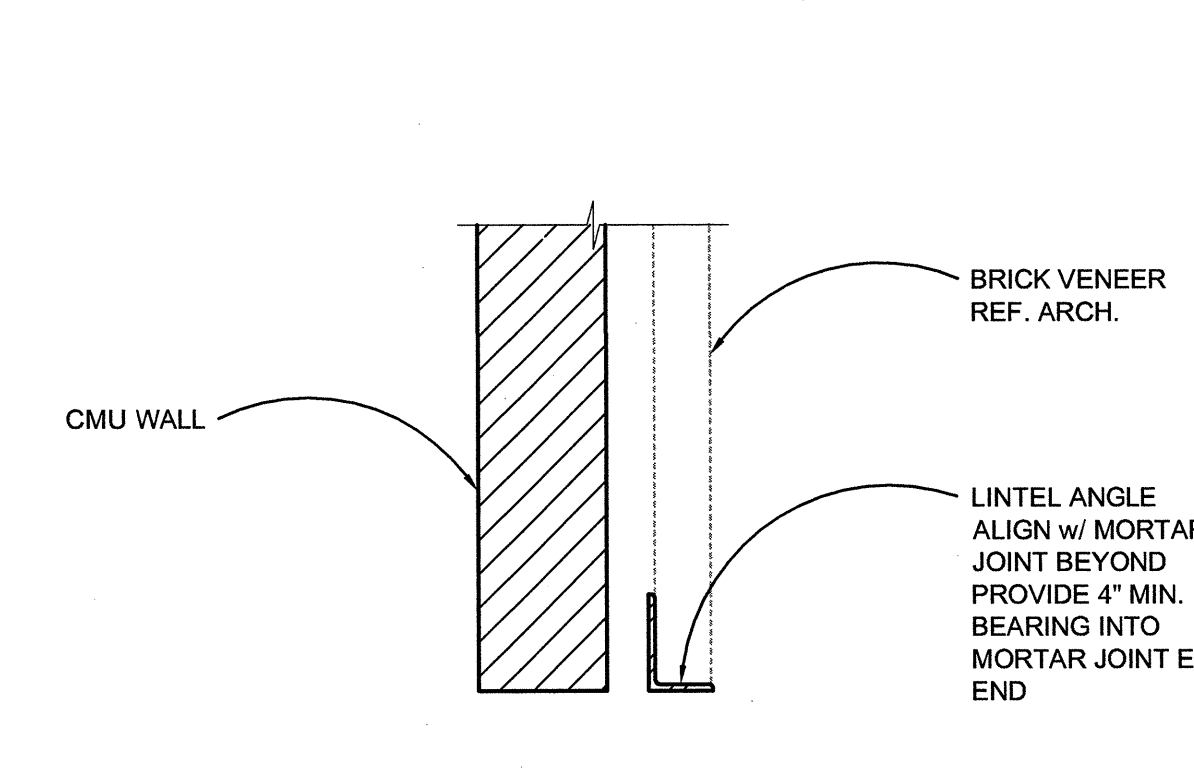
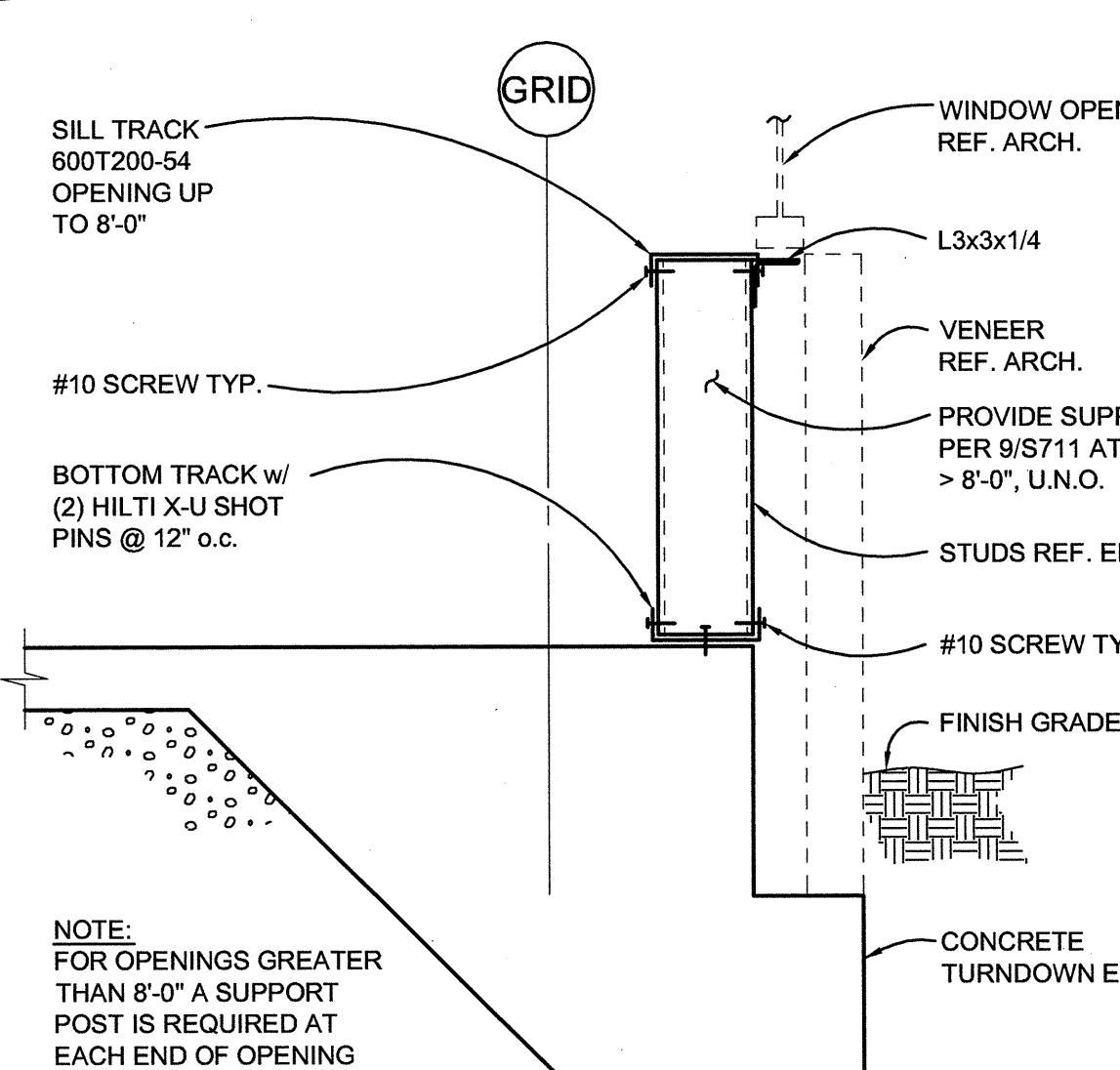
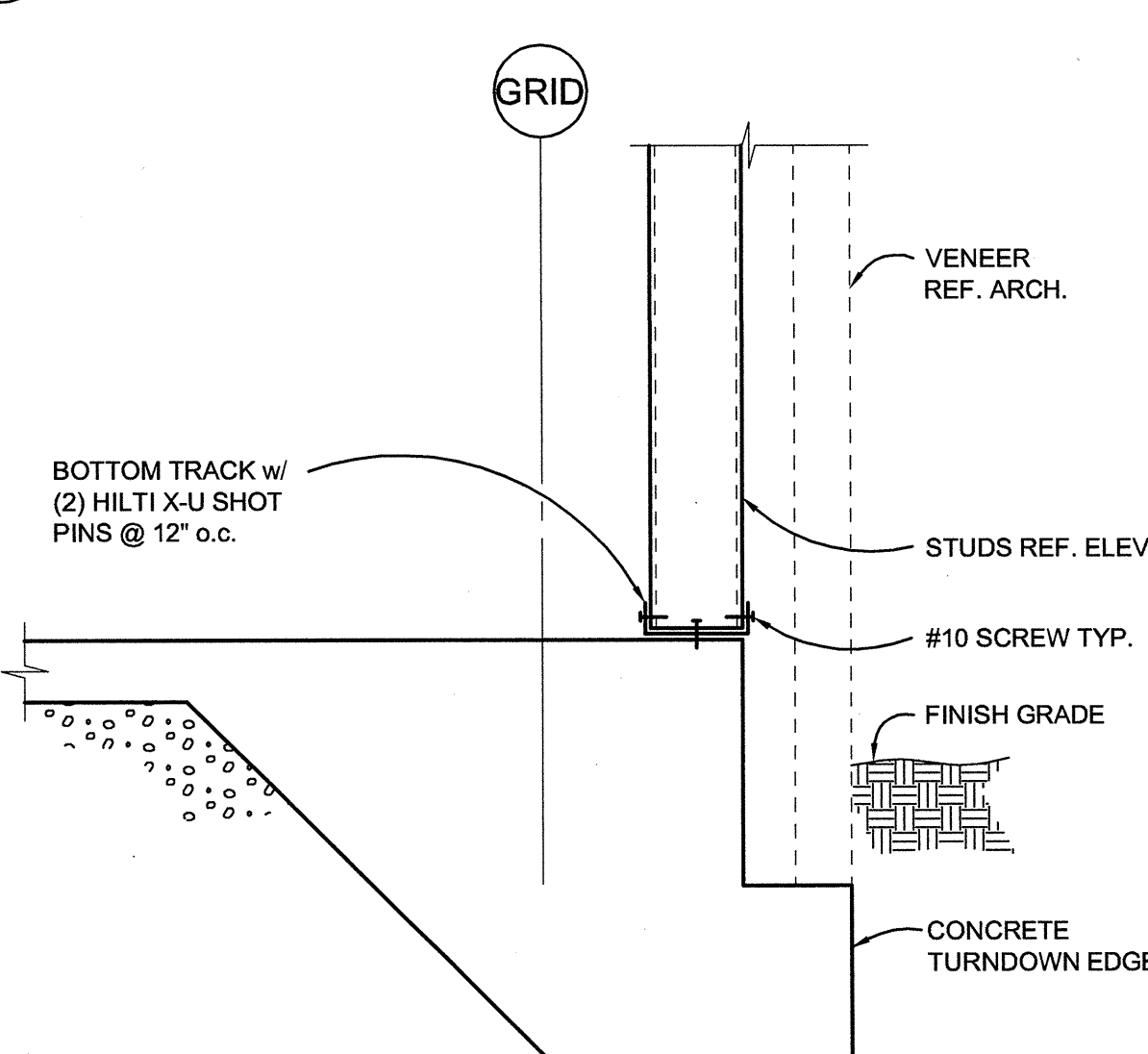
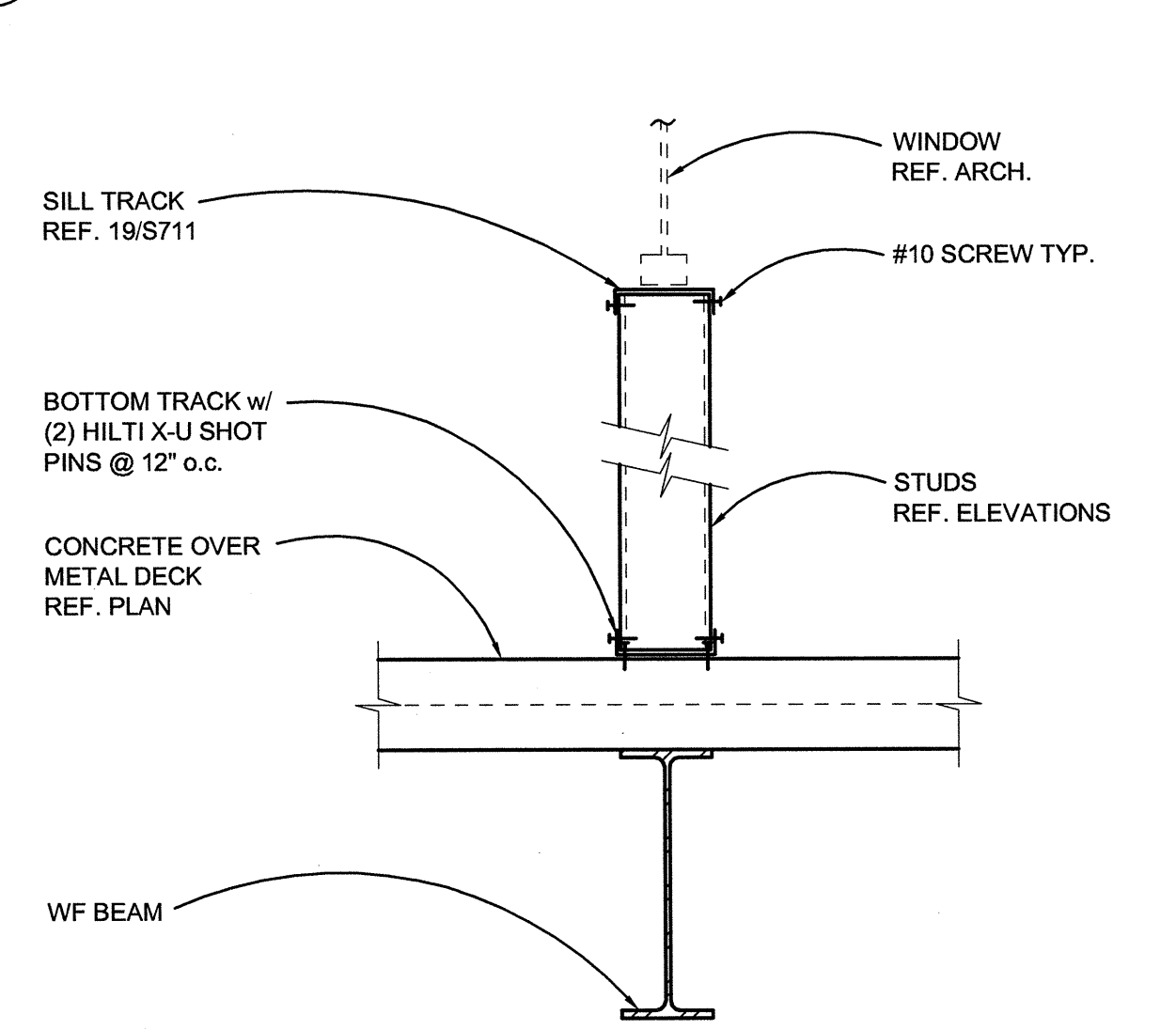
19 CLADDING DETAIL AT SILL
1"=1'-0"

15 CLADDING DETAIL AT SECOND FLOOR
1"=1'-0"

11 CLADDING DETAIL AT SECOND FLOOR
1"=1'-0"

7 FRAMING AT VERTICAL DEFLECTION JOINT
1"=1'-0"

3 TYP. GENERAL STRUCTURAL NOTES



SPAN	ANGLE SIZE
0' TO 4'-0"	L4x4x1/4
4'-1" TO 7'-8"	L6x4x5/16 LLV
7'-8" +	CONTACT STRUCTURAL ENGINEER

TYPICAL HEADER SCHEDULE			
HEADER	HEADER TYPE	CLIP TYPE	NOTES
H-1	(2) 600S162-43 w/ (2) 600T150-43	STIFF CLIP HE-43 EACH SIDE w/ (8) #10	
H-2	(2) 600S162-54 w/ (2) 600T150-54	STIFF CLIP HE-43 EACH SIDE w/ (8) #10	
H-3	(2) 600S162-43 w/ (2) 600T150-54	STIFF CLIP HE-43 EACH SIDE w/ (12) #10	
H-4	(2) 600S200-68 w/ (2) 600T200-68	STIFF CLIP HE-43 EACH SIDE w/ (12) #10	

NOTE:
REF. DETAIL 5/S701 FOR HEADER FRAMING AND TYPE.

20 CLADDING DETAIL AT SILL
1"=1'-0"

16 CLADDING DETAIL AT SLAB ON GRADE EDGE
1"=1'-0"

12 CLADDING DETAIL AT WINDOW SILL
1"=1'-0"

8 BRICK VENEER LINTEL ANGLE
1"=1'-0"

4 TYPICAL HEADER SCHEDULE

boora
boora architects inc.
720 SW Washington St. 6th. Portland, OR 97205
503.226.1915 F. 503.241.7429

Rock Creek Middle School
HAPPY VALLEY, OREGON
60271

REGISTERED PROFESSIONAL ENGINEER
No. 8717
OREGON
JAN. 21, 1997
ERIALD L. ARVIE
EXPIRES 12-31-09

BID SET

No. REVISION DATE

k p f f
Consulting Engineers
111 SW 5th Avenue
Suite 2500
Portland, Oregon 97204
503.227.3251

CLADDING DETAILS

Scale: As indicated
Drawn By: CB
Issued: 12.19.2008
S711